



**He aha te mea nui o te ao?
He tangata, he tangata, he tangata**

What is the most important thing in the
world?

It is the people, it is the people, it is the people

Kaupapa Maori Mental Health and Addiction Service



Mana o te Tangata Trust

STRATEGIC PLAN 2015 - 2020

Our Key Principles

Mission Statement

Me Mahi Tahī Tatou
Leading successful
generational change, we
can navigate success
together.

Kaitiakitanga

We are committed to improving the mental health and addiction status and protecting the wellbeing of our future generations. We will provide support and cultural leadership within the service to enhance the wellbeing of Tangata whaiora and their whanau.

Our Vision

Creating a future that
will allow Tangata
whaiora and their
whanau to live
independently of mental
health and addiction
services.

Kotahitanga

We are committed to forming sound relationships with other organizations that assist in improving the health and wellbeing of Tangata whaiora and their whanau. We will achieve individual and whanau transformation (health, education, social & employment)

Manaakitanga

We provide and encourage safe environments that are clean comfortable and all those involved can participate in a meaningful way. We will achieve the best health and social outcomes for Tangata whaiora and their whanau.

Our Values

Keeping Tangata whaiora
and their whanau at the
center of our world and
successfully leading
change from a peer world
view.

Wairuatanga

We are committed to challenging the generational impacts of abuse, alcohol and drugs that currently place Tangata whaiora and their whanau in a space of powerlessness. Decreasing harm caused by unresolved trauma among whanau.

KAITIAKITANGA

To guard, to keep, to persevere, to conserve, to foster, to protect, to shelter, to keep watch over (Marsden, 1992).

Conduit guardian of spirits / deceased tupuna, messengers, conduit of communication of spiritual world and mortality (Barlow, 1991).



KAITIAKITANGA



Maraku 2017



Kia
Oru

TE PATAKA MAURI ORA

The Storehouse of
Wellbeing

Pataka (Storehouse) - Was a method of storing food and other items in a elevated platform.

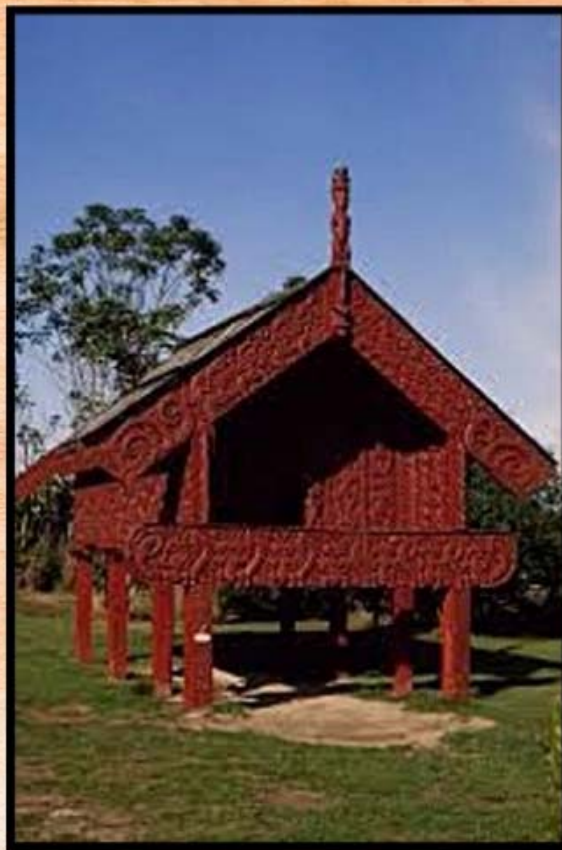
They were supported by one, four , or more posts to protect the contents from rats and damp.

Pataka were usually elaborately carved.



FIG. 113.—Carved storehouse.

Pataka for me?
Source of nourishment
to sustain your self,
whanau, hapu and iwi.

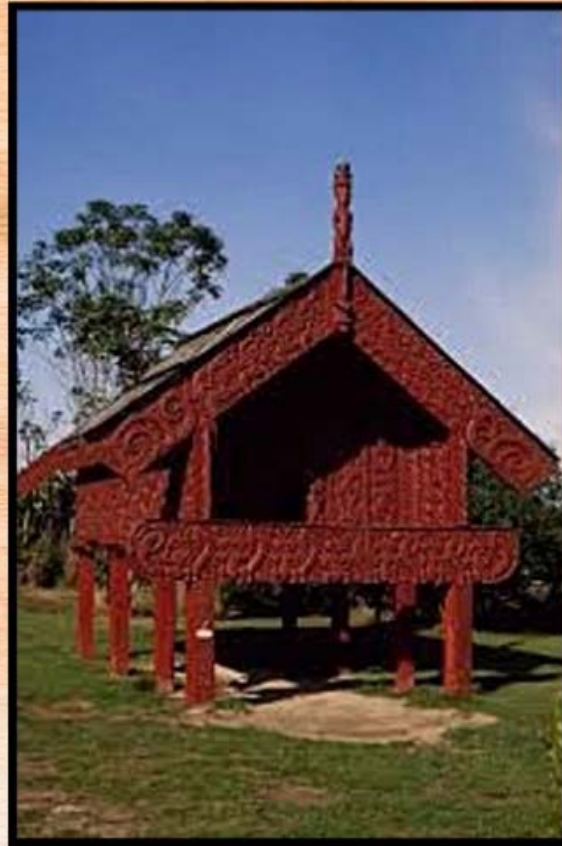


Pataka can belong
to the individual,
whanau, hapu and
iwi.



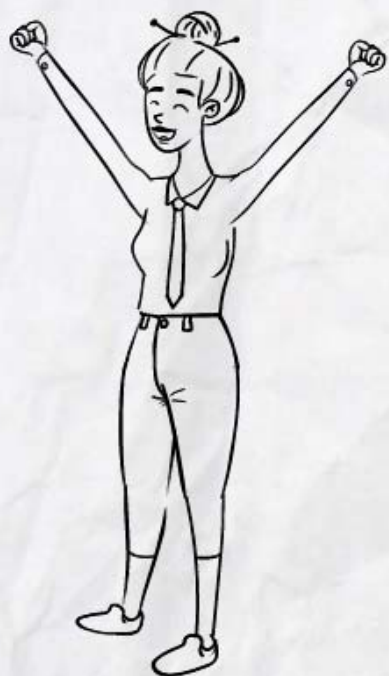
Whakapapa

Replenish



Whakapapa





**Ko wai
ahau?**

Who am I?

Tipuna



George Te Oti MacDonald
Rina Puhipuhi MacDonald



Tuiti Makitanara / MacDonald
Karaitiana MacDonald



Tauia MacDonald Shirley MacDonald

Tipuna



John Bell Rhoda Bell

Tipuna



Barry Huff



Davinia Huff

Contextual Bias

Dissonance

lack of agreement or
harmony between people
or things

Racism
Power and
positioning
Assumptions



"We don't colonise, these days, through the barrel of a gun, but through the comfortable words of those who change the hearts, minds and spirits of people" (Waldegrave, 2001).

Kaitiakitanga

PRINCIPLES



AWHINATANGA

Positive
Encouragement
Good Listener



WHANAUNGATANGA

Kinship
Healthy Relationships
Effective communication



WAIRUTANGA

Open Minded
Spiritual Wellbeing
Progressive



MANAAKITANGA

Looking after
Kindness
Empathy

Whānaungatanga

Awhinatanga



Manaakitanga

Wairuatanga



He aha te mea nui o te ao?
He tangata, he tangata, he tangata

LIVE ANOTHER DAY - (Lyrics)

(Hemi) "Whakarongo pikari mai
ki te kotahi, te kakaho, ka whati
ki te kapuia, e kore e whati"

(Kelly) Hey to the community We need to stand up in unity Show them it's
okay, don't stand in the dark We all have to share an equal part

I said... hey to the community We need to stand up in unity Show them it's
okay, don't stand in the dark We all have to share an equal part

I know and understand, it can be hard sometimes Reaching out for help is
like a stab in the dark And you feel like your world is falling apart Don't give
in, I know it's not now clear But keep on looking cos there's someone who
cares Who knows your worth it, worth the time to love and support you and
SAVE YOUR LIFE

Hey to the community We need to stand up in unity Show them it's okay, don't
stand in the dark We all have to share an equal part

I said..... Hey to the community We need to stand up in unity Show them it's okay,
don't stand in the dark We all have to share an equal part

(Matty) – RAP It's the magic of the people living life that's it a poetry, a love from
the whānau so deep Tihei mauri ora Be too much so mean To those who
overcome Shall receive, shall receive Lay off every weight, lay off every weight
before you For God is for you, so go soul rise Let us whānau be the prize

(Hagai) – RAP It's you're heartbeat Coming home so we don't cry We were born of
this land Welcome home, hoki mai Feel the love so deep Though you might feel
weak Let the blessing of the whānau Aroha, repeat Hear the message in the song
We direct to you Keep your head up high Trust in love, is true Hear the words we
say As we pave the way For the future generations
To LIVE ANOTHER DAY